

Come join in the fun at the

145th

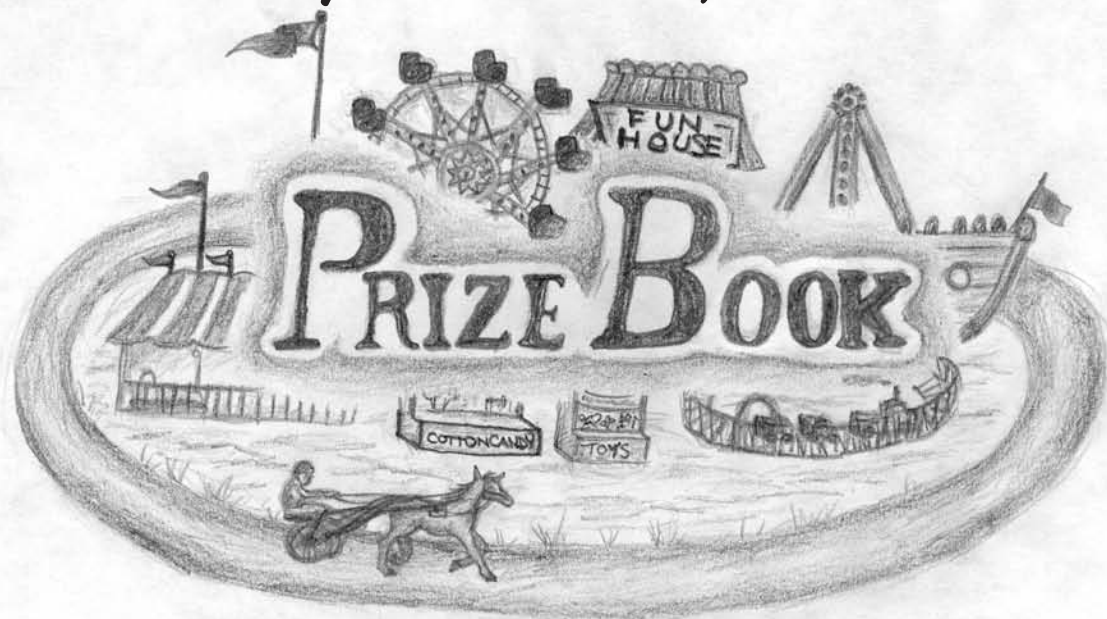
This year's theme
Old McDonald's
Farm



LANSDOWNE
FAIR

The title 'LANSDOWNE FAIR' is rendered in large, blocky, hand-drawn letters. Each letter is decorated with a different farm-related illustration: 'L' has a corn cob; 'A' has a basket of bread with steam; 'N' has wheat stalks; 'S' has a quilted patch; 'D' has a ball of yarn; 'O' has a sunflower; 'W' has a ribbon; 'N' has a ribbon; 'E' has a ribbon. Below the letters are illustrations of a horse's head on the left and a chicken's head on the right.

July 17 to 19, 2009



Designed by Oliva Le Blancq

Table of Contents

Lansdowne Royalty - Mini King & Queen, Youth Ambassador, Fair Ambassador, Senior Sovereignty	4
Community Services - Cancer Caps, Angel Hair for Kids, 2009 Board of Directors	5
For the Very Young - Baby Contest, Pet Show, Pig Wrestling	6
For Older Kids - Lawn Mower Races, Bale Decorating, Demo Derby, Cow Chip Bingo,	7
Parade, Antique Car Show, Antique Tractor Display	8
Entry Form for all Sections	9
Horses - Heavy Horse Show, Harness Racing, Horse Draw, Miniature Horse Show	11
Western Horse Show	12
A. Commercial	13
B. Vegetable and Farm Produce	13
C. Floral.....	14
D. & E. Poultry, Rabbits and Pets.....	Unavailable for this year
F. Junior & Intermediate Crafts	16
G. Handicrafts	18
H. Culinary Arts.....	19
I. Hobby Crafts.....	21
J. Visual Arts	23
K. Photography	24
L. Antiques & Collectibles	24
Rules and Regulations for Lansdowne Fair Competitors.....	25
Sponsors	26
Fine Dining, Past Presidents.....	27
Fair Map	26



Exhibitors in sections A to L, please take note

1. For each exhibitor who enters a minimum of 10 entries, he/she will receive a free one day pass to the fair.
2. For each exhibitor who enters a minimum of 20 entries, he/she will receive a free weekend pass to the fair.
3. Each person who enters will pay what is called an exhibit fee which entitles him/her to exhibit items only.
It will not entitle that person to be a voting member.
4. 2010 exhibitor's fee of \$5 will be deducted from this year's prize money, unless otherwise requested.

PLACE ENTRIES IN EXHIBIT HALL: Thursday, July 16, 2009 between 7:00 - 9:00 p.m.
Friday July 17, 2009 between 8:00 - 9:00 a.m.

TO PICK UP ENTRIES: Sunday, July 19, 2009 - 5:00 p.m. - Exhibit Hall is closed upstairs
Sunday, July 19, 2009 - 7:00 p.m. - entries ready to be picked up
Monday, July 20, 2009 - 9:00 - 10:00 a.m. in the Fair Office.

Our Royalty

All Competitions Take Place in Front of The Grandstand
Friday, July 17, 2009

FAIR AMBASSADOR

CONTACT:

Tessa Dwyre 613-359-5909

Erin Lynch 613-659-3355

Following Mini King and Queen

Please register by June 30, 2009.

Contestants:

- need not have any farm or agricultural background, but must be capable of representing the rural, farm aspect of our community.
- will have a rehearsal prior to the competition.
- will be provided with practical tips for successful interviews and public speaking.

Eligibility:

- must be a permanent resident of Leeds County for one year. Exception: home in Leeds, but attending college or university elsewhere.
- must be between the ages of 16 and 22 as of July 17, 2009.
- must be sponsored in the amount of \$50 by a business, friend or organization.

Judging is based on:

- poise, personality and appearance
- quiz
- 5 minute interview
- 3 to 4 minute speech on any topic pertaining to agriculture or the fair

The young ladies will appear in evening or cocktail length dresses, the gentlemen in suits.

The Ambassador will be required to participate in all three days of the fair plus additional events throughout the year.

MISS CONGENIALITY:.....Gift

Scholarships:

Ambassador	\$400
1st Runner-up	\$250
2nd Runner-up.....	\$200

Prize packages for all who enter

MINI KING AND QUEEN

6:45 p.m.

CONTACT:

Cory Smith-Gatcke 613-382-3345

CONTESTANTS:

1. Must be 4 by June 15 of current year and no older than 6 by July 17.
2. Will be asked a simple question.
3. No pre-entry required.
4. Registration begins on stage at 6:00 p.m.

YOUTH AMBASSADOR

CONTACT: Christina Miller

613-659-3583, or 613-532-2810

Following Fair Ambassador

(Open to boys and girls ages 10 - 15)

This is open to the talented youth of our community. The excitement begins Friday, July 17, at 5:30 p.m. when all contestants are invited to attend the Youth Ambassador Luncheon under the kid's tent.

Contestants will be asked a simple question before they display their talent and dazzle the crowd to show why they should be our 2009 Youth Ambassador for the Lansdowne Fair.

Great prizes for all.

Please register by June 30, 2009.

SENIOR SOVEREIGNTY COUPLE

This award honours a senior couple who have actively participated in our local fair and other community organizations. We are asking members of the community to submit the names of a senior couple with a brief written summation of their participation in community affairs and more specifically, our fair, stating why they should be chosen Senior Sovereigns of Lansdowne Fair.

All entries must include the name and telephone number of the nominees, and be signed by the community member who is making the submission.

Entries must be mailed to the Lansdowne Agricultural Society, P.O. Box 119, Lansdowne, ON K0E 1L0, and be received by June 30, 2009.

Community Service Projects

CAPS FOR CANCER

(For Women Cancer Patients)

CONTACT:

Gretchen Huntley 613-382-4575

For copies of patterns contact Nancy Kehoe 613-659-3605

Crocheted CapsSection G, Class 74

Sewn Caps.....Section G, Class 75

Knitted Caps.....Section G, Class 76

Community Service Project Prizes

\$10 for person who brings in most caps (crocheted, knitted and/or sewn)

\$5 for any person who brings in more than 3 crocheted, knitted and/or sewn caps

Note: Entries will not be returned.

Gretchen will distribute them with a note explaining where they originated.

ANGEL HAIR FOR KIDS

CONTACT:

Sandra Offord 613-382-7066

Join us Sunday, July 19 when we will host our 7th Annual Angel Hair for Kids event. You too can donate your hair to this worthy cause, a Canadian organization that provides wigs to children who have lost their hair because of chemotherapy. Monetary donations can also be made at the Angel Hair for Kids Table in the Red Exhibit Hall.

HAIR QUALIFICATIONS

- The hair must not be chemically treated such as bleached or permed.
- Before the hair is cut, it must be clean, dry and have no hair products in it.
- The hair has to be a minimum length of 10 inches.
- If previously cut, the hair must be in a pony tail or a braid with both ends fastened tightly.
- A qualified hair stylist will cut everyone's hair that meets these qualifications - free.

WE NEED YOU!!!

Volunteers are an integral part of the Lansdowne Agricultural Society.

Without them, there would not be a Fair, a Harvest Fun Day, or a Winter Event.

Interested in getting involved in your community? We would be delighted to have you. Your skills, our needs - a perfect match!

Let us know how you can be reached. We need you!

Board Of Directors, 2009

Co-Presidents

Todd Grier.....613-659-3095

Todd Barclay.....613-342-4333

Vice Presidents

Jim Boyd.....613-659-2602

Peggy Delaney613-382-2386

Directors

Amy Alguire, Todd Barclay, Jim Boyd,
Peggy Delaney, Donna Dempsey,
Cindy Douds, Jamie Grier, Todd Grier,
Dean Meneilley, Joyce Meneilley,
Alan Serson, Wayne Shields,
Leslie Truesdell, John Willemsen

Associate Directors

Bill Boulton, Tessa Dwyre,
Ginny Gibbins, Carol Gorsin, Tracy
Grier, Brian Huskinson, Bob Carey,
Lee Ann Dodds, Judy Horton,
Helen Lohead

Homecraft Directors

Joyce Meneilley613-659-4846
Leslie Truesdell613-659-3231

Office Staff

Fair Office.....613-659-2124

Nancy Kehoe, Secretary

Home613-659-3605

E-maillasinfo@1000island.net

Donna Dempsey, Treasurer

Home613-659-3550

Yvonne Landon, Assistant Secretary

Web Site: www.lansdownefair.com

Email: lasinfo@1000island.net

For The Very Young

Baby Contest

Sunday, July 19, 2009

Boys and girls will be judged separately

CONTACT: Jen Lawson 613-382-0112

11:00 a.m. at the Kid's Tent

REGISTRATION 10:30 a.m.

Prizes for Everyone!

Under 7 Months:

1. least hair
2. fairest hair
3. darkest hair
4. most hair
5. reddest hair
6. darkest eyes
7. bluest eyes
8. cutest smile
9. chubbiest cheeks
10. longest eyelashes
11. most unique outfit
12. cheeriest

7 - 12 Months:

1. fairest hair
2. darkest hair
3. reddest hair
4. bluest eyes
5. chubbiest cheeks
6. cutest smile
7. darkest eyes
8. most teeth
9. biggest dimples
10. longest eyelashes
11. most unique outfit
12. cheeriest

13 - 18 Months:

1. curliest hair
2. fairest hair
3. darkest hair
4. reddest hair
5. longest toes
6. biggest dimples
7. darkest eyes
8. bluest eyes
9. cutest smile
10. biggest hands
11. most unique outfit
12. cheeriest

SPECIALS: - Youngest Baby

Pet Show

Friday, July 17, 2009

1:00 p.m. at the Kid's Tent

CATS:

1. Longest tail
2. Shortest tail
3. Most colours
4. Longest whiskers
5. Shortest whiskers
6. Most beautiful eyes
7. Biggest cat
8. Smallest cat

DOGS:

1. Longest tail
2. Shortest tail
3. Curliest tail
4. Waggiest tail
5. Saddest eyes
6. Most colours
7. Smallest dog
8. Largest dog
9. Longest whiskers
10. Shortest whiskers
11. Cutest face

OTHER PETS:

1. Most unusual
2. Most colourful
3. Most loveable (with a reason)

ALL PETS:

1. Best trained pet
2. Best costumed pet and handler

NOTE: For children 14 years of age and under

Children's Pig Wrestling

Children must be between 6 & 12 years of age (weight and height could be a factor)

Children MUST register in the office before 3:00 p.m. Sunday, July 19, 2009 and then be at the grandstand before 5:00 p.m.

Names will be drawn for entry in the pig wrestling beginning at 5:00 p.m. There is no registration fee.

THIS EVENT IS ONLY HELD IF IT IS NOT TOO HOT

Agricultural Educational Barn

(located in the Red Cattle Barn)

How many stomachs does a cow have?

To find out the answer, visit our NEW Agricultural Educational Centre.

See where your food comes from!

Drop in. Check it out. Come back each day for live interactive demonstrations.

For Older “Kids”

9th Annual Lawn Mower Derby “Redneck Indy 500”

Sunday, July 19, 2009 • Race Time: 2:00 p.m.
CONTACT: Shawn Leakey 613-659-4860, cell 613-536-9910

Come check us out at our new location, north of the midway.

Free Registration

Free admission for two people per mower

There will be 5 classes (depending on number of entries)

Stock

Stock modified

Super modified

Modified

Open

Trophies will be awarded in each class.

13th Annual Demo Derby

Saturday, July 18, 2009 7:30 p.m. at The Grandstand

CONTACT: Todd Grier 613-659-3095

- * Rules and regulations at www.edge-motorsports.ca
(Click on demolition derbies and then rules).
- * Two trophies for best decorated cars.
- * Special class for half-ton trucks.
- * Get ready to smash and crash the competition out of the race.
- * Full size pro-modified, mini car, mini vans.
- * \$150 award for longest tow.
- * \$40 registration.
- * Join our official demo derby announcer, Elsie Dowdle, and have the time of your life.
- * \$2000 derby purse.

13th Annual Bale Decorating Contest

CONTACT: Nancy Kehoe 613-659-3605 to register by June 30, 2009

Everyone is invited to advertise the 145th Lansdowne Fair and show off their artistic talents. Reserve a bale on the fairgrounds for you to decorate, or use one on your own property. Judging will take place during the first week of July and winners will be announced during the Official Opening on Friday, July 17, 2009.

Prizes: 1st - \$40

2nd - \$30

3rd - \$20

Cow Chip Bingo

Outguess the cow and win \$1000! Choose “the Square” that you think the cow will mark as her own. Tickets go on sale Thursday, July 16, 2009 - \$10 each. Only 200 chances to win.

Lombardy 4-H Dairy Club Achievement Day

Sunday, July 19, 2009

* Show Time: 1:00 p.m.

4-H Snack Shack

The Lombardy 4-H Dairy Club
will be selling ice cream, milk
and cold drinks.

Please support 4-H!

Our Parade

SATURDAY, JULY 18, 2009

CONTACT: Cindy Douds 613-659-3957

Registration at the Community Building: 10:30 - 11:45 a.m.

Parade leaves at 12 noon

THEME: "Old McDonald's Farm"

PRIZES: Classes A - K

1st - \$25 2nd - \$15 3rd - \$10

- A. Best appearing Fire Department
- B. Best Non-Commercial Float
- C. Best Commercial Float
- D. Best Decorated Hay Wagon
- E. Best Appearing Demolition Derby Car
- F. Best Antique Motor Vehicle (earlier than 1980)
- G. Best Late Model Vehicle (between 1980 and 1995)
- H. Best Antique Farm Vehicle
- I. Best Horse or Pony (with costumed rider)
- J. Best Heavy Horse Team Hitched
- K. Best Single or Team Hitched (to carriage or cart)

PRIZES: Classes L - M

1st - \$10 2nd - \$8 3rd - \$6
4th - \$5 5th - \$4 6th - \$3

- L. Best Decorated Bicycle and Costumed Rider
- M. Best Costume and Performance

PRIZES: Class N

1st - \$25 2nd - \$15 3rd - \$10

- N. Best Musical Entry (other than band)

Parade Route

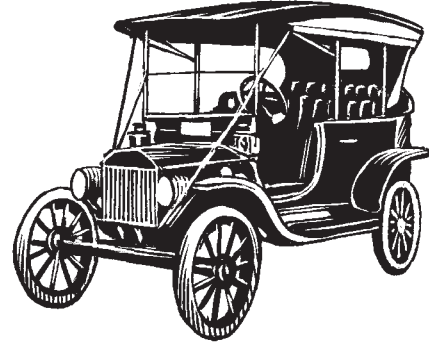
Garden, left on King, left on Prince, right on Cliffe, left on Centre, left on Beatty, across Prince into Fairgrounds

17th Antique & Classic Car Show

SUNDAY, JULY 19, 2009

Front Track

Showing: 10:00 a.m. to 4:00 p.m.



CONTACT: Dean Meneilley 613-659-4846
lansdowneweb@hotmail.com

Participant Judging - 15 Awards
Dash Plaques for the first 75 registered
Door Prizes

**Free Admission & Registration
for exhibitor and 1 passenger**

We welcome all antique/classic cars & trucks & street rods.
Clean it up, bring it out and have some fun!

Antique Tractor & Machinery Display

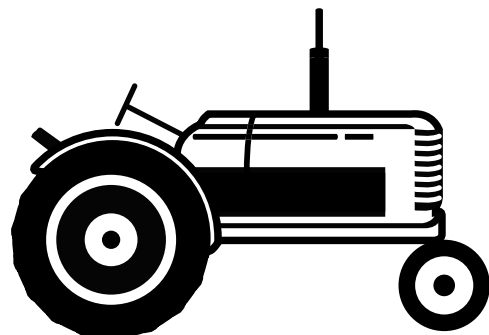
FRIDAY, JULY 17, 2009

Inside The Track

Judging: Saturday at 1:00 p.m.

CONTACT: David White 613-659-2649

You are invited to add to our display. Dash plaques for every tractor displayed. Trophies for five classes: Best Restored Tractor, Best Unrestored Tractor, Small Engine, Best Antique Machinery Display and Most Unique Display



Horses

Heavy Horse Show

Grandstand - Saturday, July 18, 2009 10:00 a.m.

CONTACT: Wayne Shields 613-659-2700

ENTRY FEE: 20% will be deducted from prize money

RULES:

- Exhibitors must show proof of a minimum one million dollars liability insurance
- No more than two entries in any class by one exhibitor
- Ribbons will be pinned to sixth place

Line Classes and Order Of Judging

PRIZES: Classes 1 - 8

1st- \$50; 2nd - \$45; 3rd - \$40; 4th - \$35; 5th - \$30

Classes

1. Stallion
2. Draft Brood Mare with 2009 foal at foot
3. Draft Foal in 2009
4. Draft Foal in 2008
5. Draft Foal in 2007
6. Draft Mare 3 years and over
7. Draft Gelding 3 years and over
8. Junior Show person 18 years and under

30 Minute Break for Lunch

9. Six Horse Tandem Hitch

PRIZES:

1st - \$305; 2nd - \$280; 3rd - \$255; 4th - \$230; 5th - \$205

Sponsored by Lansdowne Telephone/1000Island.net

10. Four Horse Tandem Hitch

PRIZES:

1st - \$280; 2nd - \$255; 3rd - \$230; 4th - \$205; 5th - \$180

Sponsored by Centennial Home Farms

Tracy & Jamie Grier

11. Unicorn Hitch

PRIZES:

1st - \$230; 2nd - \$205; 3rd - \$180; 4th - \$155; 5th - \$130

PRIZES: Classes 12 - 18

1st - \$90; 2nd - \$80; 3rd - \$70; 4th - \$60; 5th - \$50

Classes

12. Heavy Draft Team Hitched to Suitable Vehicle
 13. Light Draft Team Hitched to Suitable Vehicle
- Sponsored by Arnold Reid**
14. Team of Draft Mares Hitched to Suitable Vehicle
 15. Team of Draft Horses Hitched to Suitable Vehicle, Lady to Drive
 16. Team of Draft Horses, Junior Show Person
 17. Tandem Single, Hitched to Suitable Vehicle
 18. Single Draft, Hitched to Wagon or Cart

Each Exhibitor showing a minimum of 2 classes in 9-18 will receive \$75.00 transportation subsidy.

Sponsored by Todd Grier Excavating

Harness Racing

Grandstand - Saturday, July 18, 2009

POST TIME: 2:00 p.m.

RACE SECRETARIES:

Percy Steacy 613-659-2343

Bob Carey 613-659-2676

Special thanks to our 2008 cooler sponsors: Finucane Equine Services, Ontario Harness Horse Association, Prue's Construction, R.E. Wills Sound System, Tackaberry Construction, Vicki Grier - in memory of Bob Grier, and Dunn's Home Improvement. The Ontario Harness Horse Association each year donates \$1500 to our purse, as well as a cooler. The Lansdowne Agricultural Society appreciates their generosity and helpfulness in promoting harness racing at our fair.

Miniature Horse Show

Grandstand - Sunday, July 19, 2009, 12:00 noon

CONTACT: Wayne Shields 613-659-2700

ENTRY FEE: 20% will be deducted from prize money

RULES:

- Exhibitors must show proof of a minimum one million dollars liability insurance.
- No more than two entries in any one class by one exhibitor.
- Ribbons will be pinned to sixth place.
- Miniature horses must be 38 inches or less in height .

Class List and Order Of Judging:

1. Miniature Six Horse Hitch
PRIZES: 1st \$100; 2nd \$80; 3rd \$60; 4th \$40; 5th \$20
2. Miniature Four Horse Hitch
PRIZES: 1st \$80; 2nd \$65; 3rd \$50; 4th \$35; 5th \$20
3. Miniature Unicorn Hitch
PRIZES: 1st \$60; 2nd \$50; 3rd \$40; 4th \$30; 5th \$20
4. Miniature Team Open
PRIZES: 1st \$50; 2nd \$ 40; 3rd \$30; 4th \$20; 5th \$10

Horse Draw

CONTACT: Wayne Shields 613-659-2700

Grandstand - Sunday, July 19, 2009 7:00 p.m.

Light Class - Under 3,400 lbs per team

Heavy Class - Over 3,400 lbs per team

Lansdowne Agricultural Society Rules will apply.

\$2720 in Prize Money

PRIZE MONEY

- | | |
|----------|----------|
| 1. \$240 | 5. \$160 |
| 2. \$220 | 6. \$140 |
| 3. \$200 | 7. \$120 |
| 4. \$180 | 8. \$100 |

Those teams completing three rounds will receive \$40 hitch money.



Western Horse Show

Sunday, July 19, 2009 - 9:00 a.m. start - Main Horse Ring

JUDGE: Jim Uens

CONTACT: Lee-Anne Cross 613-483-2452 or lcross_28@hotmail.com

Please note that Fair exhibitor fee of \$5 per exhibitor is required for all participants 14 years of age and older. All exhibitors must show proof of liability insurance to compete. Insurance Company name and policy number must be written on the entry form. Exhibitors 18 years of age and under must include exact age on the entry form and parent/guardian signature. Please note: The Lansdowne Fair Western Horse Show Committee does reserve the right to cancel speed event classes due to weather and/or ring conditions. Safety of competitors is our priority!

Entry Fees & Prizes

13 & Under - \$3 fee per class. Payback for 13 & Under1st - \$102nd - \$8.....3rd - \$64th - \$4.....5th - ribbon
 14 to 18 - \$4 fee per class. Payback for 14 to 181st - \$122nd - \$10.....3rd - \$84th - \$6.....5th - ribbon
 19 & Over - \$5 fee per class. Payback for 19 & Over1st - \$202nd - \$17.....3rd - \$154th - \$10.....5th - ribbon
 Open (all ages) - \$6 fee per class. Payback Open1st - \$252nd - \$20.....3rd - \$164th - \$12.....5th - \$10
 Youth 18 & Under (#10, 12 & 21) \$4 per class. Payback1st - \$122nd - \$10.....3rd - \$84th - \$6.....5th - ribbon

****Halter is an Open Division. Exhibitors and horses of all ages may compete.**

Entry fee is \$3, prizes are ribbons only- with a Grand Champion Rosette to the winner**

Please be advised that 2010 exhibitors fee's will NOT be deducted from prize money won at the 2009 show.

Performance Classes

1. **Halter - Open (Rosette to winner, no payback)
2. Showmanship 13 & Under
3. Showmanship 14 - 18
4. Showmanship 19 & Over
5. English Pleasure 13 & Under (Pony)
6. English Pleasure 13 & Under (Horse)
7. English Pleasure 14 - 18
8. English Pleasure 19 & Over
9. English Pleasure OPEN
10. English Equitation 18 & Under
11. English Equitation 19 & Over
12. Hunter Hack 18 & Under
13. Hunter Hack 19 & Over

—Lunch Break—

14. *Leadline (English/ Western, Horse or Pony)
(Exhibitor may not compete in any other class)
15. *Walk & Jog/ Trot (English/ Western, Horse or Pony)
(Exhibitor may not compete in any other class)
16. Western Pleasure 13 & Under (Pony)
17. Western Pleasure 13 & Under (Horse)
18. Western Pleasure 14 - 18
19. Western Pleasure 19 & Over
20. Western Pleasure OPEN
21. Western Horsemanship 18 & Under
22. Western Horsemanship 19 & Over
23. Command 13 & Under
24. Command 14 - 18
25. Command 19 & Over
26. Combination OPEN - English Pleasure,
Western Pleasure & Barrels.
Tack changes in ring with only 2 helpers!

Games/ Speed Events

27. Sit-A-Buck 18 & Under - pay a twoonie at the gate,
winner takes all!
28. Sit-A-Buck 19 & Over - pay a twoonie at the gate,
winner takes all!
29. Barrels 13 & Under
30. Barrels 14 - 18
31. Barrels 19 & Over
32. Barrels OPEN
33. Keyhole 13 & Under
34. Keyhole 14 - 18
35. Keyhole 19 & Over
36. Keyhole OPEN
37. Flag 13 & Under
38. Flag 14 - 18
39. Flag 19 & Over
40. Flag OPEN
41. Poles 13 & Under
42. Poles 14 - 18
43. Poles 19 & Over
44. Relay OPEN
45. Double Barrel Pickup OPEN

Class 14 & 15 are \$3 per entry with ribbons and prizes for the winners!

Other participants please note that prize money will be presented at the end of each class.

**This show is hosted by the
Leeds & District Western Horse Association for the
Lansdowne Agricultural Society.**

Commercial

Section A

CONTACT: Richard Davis 613-659-3300

ENTRY FEE: 10% will be deducted from all prize money.

PRIZES: \$9 - \$7 - \$5

RULES:

- All entries to be grown by the exhibitor.
- Seed must be 2007 or 2008 growth.
- All grain and corn must be of the 2007 or 2008 crop.
- All hay must be of the 2009 crop, suitable for dairy cattle.
- Hay exhibits will consist of 2 four inch slices from a bale; one for judging, one for display purposes.
- Forage and grain exhibits to be shown in plastic bags or wrapped in plastic.

SEED AND GRAIN

1. Oats, 5 lbs
2. Barley, 5 lbs
3. Spring wheat, 5 lbs
4. Mixed grains, 5 lbs
5. Fall wheat, 5 lbs
6. Sheaf of oats, 3" in diameter
7. Sheaf of barley (2 or 6 rows), 3" in diameter
8. Sheaf of fall wheat, 3" in diameter
9. Eight ears of corn
10. Sheaf of 8 stalks of silage corn
11. Shelled corn, 5 lbs
12. Trefoil, 5 lbs
13. Buckwheat, 5 lbs
14. Timothy, 5 lbs
15. Red Clover, 5 lbs
16. Soybeans, 5 lbs
17. White beans, 5 lbs

HAY

18. Baled hay, 75% legumes (1st cut)
19. Baled hay, 75% grass
20. Second cut legume hay

SILAGE

21. Haylage, 8 lbs
22. Corn silage, 8 lbs
23. Baylage, 8 lbs

Vegetables and Farm Produce

Section B

CONTACT: Kathy Baker 613-659-3050

ENTRY FEE: 10% entry fee - deducted from all prize money.

PRIZES: \$5 - \$4 - \$3

RULES:

- Display all entries on paper plate, unless otherwise indicated.
 - Variety name must appear on the entry tag if requested.
 - Leave calyx on tomatoes and ½" top on carrots.
 - Leave ½" of root on onions. Do not peel outside skin, wipe gently with dry cloth if needed.
 - Dust off potatoes, do not wash.
 - Lettuce may be displayed in water.
 - All vegetables must be grown by exhibitor.
1. Beans, green bush.....5 pods
 2. Beans, yellow wax5 pods
 3. Beans, novelty (other than green or yellow)5 pods
 4. Beets, table, tops removed to 1", root on3
 5. Broccoli1 head
 6. Carrots, baby.....3
 7. Carrots, table.....3
 8. Cucumbers, slicing3
 9. Cucumbers, pickling3
 10. Horseradish, tops removed to 4"1 root
 11. Herb, cut, 1 specimen shown in water, named1
 12. Lettuce1 head
 13. Onions, green, tops cut 6-8" over white root3
 14. Onions, table3
 15. Peas, snow, in pods3
 16. Peas, table, in pods3
 17. Pepper, hot3
 18. Pepper, sweet3
 19. Potatoes, any variety3
 20. Radishes, tops cut to ½" 3
 21. Rhubarb, 2" fan leaf, do not trim bottom3
 22. Squash, summer, any variety (e.g. zucchini, scallop).....3
 23. Tomatoes, green.....3
 24. Tomatoes, small, fruited, ripe3
 25. Any other vegetable, not listed, named1 specimen
 26. Collection of vegetables, minimum 5 different kinds, named, may include edible flowers and cut herbs, in a container of your choice
 27. Jumbo - an overgrown vegetable, one specimen, judged by size and weight
 28. Herb vinegar, one bottle, contents named
 29. One dozen eggs, white shell
 30. One dozen eggs, brown shell
 31. One dozen eggs, any other variety or shell colour
 32. One pint of maple syrup displayed in a smooth, clear jar
 33. Three patties of maple sugar
 34. One jar honey, light, extracted
 35. Two one-pound honeycombs
 36. Unusual/funny looking vegetable1 specimen
 37. Exhibit of any other kind of fresh fruit, named1 variety

AWARD CERTIFICATE: Judge's Choice - Classes 1 - 37

Floral

Section C

CONTACT: Donna Dempsey 613-659-3550

ENTRY FEE: 10% will be deducted from all prize money

NOTE: No entry fee will be deducted for Class #53, open to seniors only.

PRIZES: \$5 - \$4 - \$3

Hints To Successful Showing

Thanks to Carmen Tedesco-Wood, a horticulturalist, we have some hints and tips for floral exhibitors. They are available on our website under the Floral tab, or call Nancy at 613-659-3605, or stop in at the fair office. Guaranteed to be informative and worth your while.

Cut Flowers

RULES: Quality of blooms, appropriate length of stem and foliage will be considered in judging specimens.

Specimens must be accompanied by their foliage.

No soil, no oasis.

Please remember to measure if required.

CLASS

1. Begonias, tuberous, any colour1 stem
2. Begonias, tuberous, 3 colours3 stems
3. Calendula3 stems
4. Celosia.....3 stems
5. Centaurea (Bachelor Buttons).....3 stems
6. Clematis1 stem
7. Coreopsis.....3 stems
8. Cosmos3 stems
9. Dahlias 2 - 5 inches.....3 stems
10. Delphinium.....1 stalk
11. Dianthus3 stems
12. Gaillardia.....3 stems
13. Hemerocallis (Day Lily).....1 stem
14. Hydrangea.....1 head
15. Impatiens, single3 stems
16. Impatiens, double3 stems
17. Lavatera.....3 stems
18. Lily (Asiatic, Trumpet, Oriental)1 stem
19. Marigold, large, 3 inches and over3 stems
20. Marigold, medium, 2 - 3 inches3 stems
21. Marigold, small, under 2 inches3 stems
22. Nasturtium.....3 stems
23. Nicotiana3 stems
24. Pansies/Viola, 1.5 inches and over3 stems
25. Pansies/Viola, under 1.5 inches3 stems
26. Petunia, single, one colour3 stems
27. Petunia, double/semi-double, one colour3 stems
28. Petunia, mixed colours, mixed varieties3 stems
29. Phlox, annual.....3 stems
30. Phlox, perennial3 stems
31. Rose, hybrid tea1 stem

32. Rose, floribunda1 stem
33. Rose, shrub1 stem
34. Rose, miniature.....1 stem
35. Salvia, red3 stems
36. Salvia, any other colour3 stems
37. Shasta Daisy3 stems
38. Snapdragons3 stems
39. Summer bulbs, any variety1 stem
40. Sweet Pea, annual3 stems
41. Zinnia, blooms under 4 inches3 stems
42. Zinnia, blooms over 4 inches3 stems
43. Any other variety, annual, not listed, named1 stem
44. Any other variety, perennial/biennial, named.....1 stem
45. Collection of Coleus - 3 or more stems, featuring different colours in one container, in water
46. Collection of garden flowers, 5 different species, named, maximum 10 stems, shown in a single container
47. Collection of 5 different herbs, cut, named, in a country container, maximum 10 stems
48. Collection of edible flowers, cut, named, in a suitable container
49. Display of Petunias - mixed varieties and colours, 9 stems in a single container

AWARD CERTIFICATE AND \$20 GIFT CERTIFICATE:

Best Cut Flowers Classes 1 - 49

Decorative

RULES: Materials for the Decorative Class may be obtained from any other garden source (eg. family member or neighbour.)

Fruit, branches, decorative wood, dried and/or treated material may be used; but artificial plant material is not permitted.

No silk flowers or foliage. Soil not permitted.

50. TEA PARTY

A fresh flower arrangement in a tea pot.

51. GOOD MORNING

Arrangement of fresh cut flowers in a coffee mug.

52. PERFECTION

An arrangement using 1 perfect bloom of your choice, foliage and filler may be used.

53. TABLE ARRANGEMENT

For Senior Citizens only.

A fresh flower arrangement in a suitable container.

54. TEAM SPIRIT

An arrangement of fresh materials using the colours of an NHL team. Team logo must be included. Other accessories may be used.

55. TINKERBELL

A small arrangement featuring white and silver, not to exceed 5 1/2 inches in width and 10 inches in height including the container. Accessories may be used.

Floral

Section C - Continued

56. **LITTLE JEWELS**
Miniature arrangement not to exceed 5 inches in any dimension including the container and accessories.
57. **CIRCUS IS COMING TO TOWN**
A colourful arrangement of fresh materials to be viewed from all sides. Accessories may be used.
58. **HAPPY HOUR**
An arrangement of fresh flowers in a beverage glass.
59. **R'S (Reduce, Reuse, Recycle)**
An interpretive arrangement using some recycled materials with flowers/foilage.
60. **GREEN WITH ENVY**
An arrangement of various types of cut foliage to accent texture, tone and colour. (No flowers)
61. **BEAUTY IN A BASKET**
A fresh arrangement of mixed flowers in a basket, fresh filler or foliage may be used.
62. **DAYS GONE BY**
An arrangement of fresh heritage flowers and herbs in an antique container.
63. **FOREVER YOURS**
A design using plant material dried/preserved in any manner.
64. **ROADSIDE RAMBLE**
Arrangement of wild flowers in a suitable container.
65. **SNOW WHITE**
An arrangement of fresh white flowers and green foliage, suitable for a dining table.
66. **SUNSHINE**
An arrangement of fresh cut flowers in shades of yellow.
67. **CRAZY FOR YOU**
An arrangement of fresh materials judged on originality of design and container. Accessories may be used.
68. **WELCOME WREATH**
A design of fresh or dried materials suitable to hang on a door.
69. **"SCENTIMENTAL JOURNEY"**
Arrangement of herbs and scented flowers.
70. **WELCOME LITTLE ONE**
Arrangement of fresh flowers suitable for a baby shower.

AWARD CERTIFICATE AND \$20 GIFT CERTIFICATE:
Best Arrangement - Classes 50 - 70

OUTDOOR PLANTERS FOR PORCH OR PATIO

71. Outdoor hanging flowering container judged on appearance only.
72. Outdoor window box, not to exceed 24 inches, judged on content only.
73. Outdoor planting of flowers displayed in a country container.
74. Collection of coleus in a planter to feature varied colours and textures.
75. Herb Garden, basket containing 5 herbs individually potted and artistically arranged and labeled.

POTTED HOUSE PLANTS

76. African Violet, single crown, any colour1 specimen
77. Aloe Vera1 specimen
78. Begonia (tuberous)1 specimen
79. Cactus/Succulent1 specimen
80. Cactus/Succulent Garden1 container
81. Fern, any variety (i.e. Boston, Sword, Maiden Hair)1 specimen
82. Geranium, grown for blooms1 specimen
83. Ivy, any variety1 specimen
84. Jade plant1 specimen
85. Spider plant.....1 specimen
86. Prayer plant.....1 specimen
87. Trailing plant, not listed1 specimen
88. Plant grown for bloom, not listed1 specimen
89. Plant grown for foliage, not listed 1 specimen
90. Scindapsus (i.e. Golden Pathos)1 specimen
91. Philodendron.....1 specimen

AWARD CERTIFICATE AND \$20 GIFT CERTIFICATE:
Best Potted Plant - Classes 71 - 91

AWARD CERTIFICATE AND \$20 GIFT CERTIFICATE:
Judge's Choice - Classes 1 - 91



Junior & Intermediate Crafts

Section F

CONTACT: Cindy Douds 613-659-3957 or Ginny Gibbons

ENTRY FEE: No fee for Junior Kindergarten to Grade 8
Grades 9 - 12: 10% deducted from prize money

PRIZES: Juniors \$4 - \$3 - \$2 Intermediate \$5 - \$4 - \$3

RULES: Please read carefully.

1. Grade is based on the grade you were in on Jan. 1st, 2009.
2. An exhibitor's fee is NOT required for Juniors (Junior Kindergarten thru Grade 8), however an exhibitor number and entry sheet are needed.
3. An exhibitor fee of \$5 is required for Intermediates (Grades 9 - 12), as well as an exhibitor number & entry sheet.
4. Children are allowed to enter categories above their grade level but will be disqualified if they enter categories below their grade level.
5. ALL ARTICLES MUST BE NEW WORK - NOT EXHIBITED BEFORE!
6. All food must be displayed on a paper plate inside a Ziploc bag.
7. Grade level must be on entry tag and entry sheet.

Junior Crafts

ROSETTE: Judge's Choice for each Grade

JUNIOR KINDERGARTEN

1. Drawing of my family
2. Decorated pet rock
3. Trace your foot and decorate it to look like a fish
4. Create a picture of a chicken using popcorn - add features - beak, eyes, feet, etc.
5. Using crayons, create a rainbow

SENIOR KINDERGARTEN

6. Paper bag "PIG" puppet
7. Print your first name on a sheet no larger than 5" x 7"
8. Create a lamb using a paper plate & cotton balls - add features
9. Picture of a turkey created from your handprint - no larger than 8.5" x 5.5"
10. Make and decorate a crown

GRADE 1

11. Drawing of "Me and my family at the Lansdowne Fair"
12. A bookmark decorated using stickers and any other media
13. Colouring book picture of any animal, coloured by you
14. Paper bag "DOG" puppet
15. Decorate your first name using buttons
16. Character made out of hearts, cut out and pasted on construction paper
17. Decorate a new toothbrush (ready to hang)

GRADE 2

18. Create a sunflower using seeds
19. A mobile created from a tree branch using articles from nature - acorns, pinecones, etc.
20. Penmanship - the first verse of "Mary Had a Little Lamb"
21. Homemade necklace made from any material
22. Handmade "Father's Day" card featuring "helping dad with chores"
23. Drawing depicting "Me and my best friend on a ride at Lansdowne Fair"
24. Create a special tooth box for the tooth fairy

GRADE 3

25. Create a barnyard of animals using popsicle sticks and pipe cleaners
26. Fridge magnet using a clothespin to be used as a message holder
27. Decorate your rubber boot
28. Print a list of rules for your parents
29. Coloured picture of "Me and my friends at Lansdowne Fair"
30. Make a butterfly, with a string to hang
31. Collection of 3 different leaves, mounted and named
32. Create Old McDonald's cabin using mud, sticks and twigs, mounted on a base, maximum 12" x 12"

GRADE 4

33. Build a John Deere tractor out of recycled materials - no longer than 10"
34. Arrangement of feathers in an unusual container
35. Decorated pen/pencil holder suitable for desk top
36. Design a light switch cover, depicting your favourite hobby
37. Penmanship - writing in INK ONLY, provinces and territories with capital cities
38. Set of 3 wooden or plastic spoons decorated and displayed to look like a bouquet of flowers
39. Handmade coin bank to resemble a farm animal
40. Little Red Riding Hood's basket, with items she took to Grandma's house
41. Make a realistic bird's nest, using any material
42. Build a scarecrow no taller than 3 feet

GRADE 5

43. Collection of 5 different types of leaves, pressed, mounted, named
44. Keepsake box, designed and decorated by you
45. Decorated t-shirt
46. Knitted scarf, minimum 4" wide, judged on length only
47. Mobile created using items found in a toolbox
48. Best decorative or functional homemade craft using a pint or quart canning jar
49. "Beware of _____" - choose any animal to fill in the space and make a sign 8.5" x 11", no computer entries
50. Finish this poem in 6 to 8 lines - "I'm going to the Lansdowne Fair"

GRADE 6

51. Look what I found in Grandpa's straw hat (display in a hat)
52. Collection of evergreen needles mounted, no larger than 8.5" x 11"
53. Large cookie of a farm animal
54. Three related photos, 4" x 6", mounted, showing "our holiday"
55. An Inukshuk, must be glued together and no larger than 12"
56. Dress a cob of corn to look like a farmer
57. Brochure promoting "The 1000 Islands", 8.5" x 11", folded in three, computerized
58. Flag designed for Lansdowne, 5" x 7", attached to a "pole" no longer than 12"
59. Copy a poem, minimum of 3 verses, judged on your handwriting
60. Pencil sketch of yourself as you might look at 90 yrs of age

Junior & Intermediate Crafts

Section F - Continued

GRADE 7

61. Create a Canadian stamp, no larger than 5" x 6"
62. Three related photos, 4" x 6", mounted, showing family pet
63. Create a rain gauge using recycled materials
64. Create a wind chime using recycled materials
65. Design your own CD cover, in a CD case
66. "Salute to a farmer"- arrangement of weeds in a straw hat
67. Design a cover for a cookbook, 5" x 7"
68. Create a rebus story (using pictures to replace some of the words) - one page only
69. Uniquely present a computer page that says "Lansdowne Fair"
70. Type and mount a list of rules for your parents
71. Hand drawn comic strip, minimum of 3 frames, give title

GRADE 8

72. Build a birdhouse made out of wood to resemble Old McDonald's Barn
73. A picture drawn from a photograph, photo must be attached
74. Create a mouse pad for your computer
75. Computer designed calendar, month of July
76. Your favourite photo 4" x 6", mounted with caption
77. Mobile depicting "beekeeping"
78. Create a dream catcher from any media
79. Decorate a free standing photo frame to hold a 4" x 6" photo
80. Design a get well card, using computer graphics, include your own verse

Intermediate Crafts

ROSETTE: Judge's Choice Classes 81 - 94

GRADES 9 - 12

81. Brochure promoting the "History of Lansdowne Fair", 8.5" x 11", folded in three, computerized
82. Computer - generated poster advertising "Harvest Fun Day," September 12, 2009. All entries become the property of Lansdowne Agricultural Society
83. Create a sun dial
84. Photo album cover made from recycled jeans along with any other material
85. Create an educational poster, not computerized, about horses and their place in agriculture
86. Decorate a single layer cake, judged on appearance only
87. Decorate a gingerbread man
88. Three decorated rolled cut-out cookies, judged on appearance only
89. Crocheted dish cloth
90. Knitted dish cloth
91. Longest knitted scarf, judged on length only, must be at least 6" wide
92. Painting depicting "The 1000 Islands Bridge", no larger than 11" x 14"
93. Create a set of 4 drawings that depict the 4 seasons of the maple tree, combined no larger than 8.5" x 11"
94. Create a painting/drawing of a barnyard to include three different farm animals

Specials

95. Prize Book Cover

PRIZE: 1st \$50 - 2nd \$30 - 3rd \$20

All youth up to 16 years of age are invited to design a cover that may be used for next year's Prize Book.

Use your imagination and share your ideas of what the Lansdowne Fair means to our community.

RULES:

- Size 8.5" x 11", black and white.
- must be handmade (no computer).
- winning covers become the property of the L.A.S.
- may be altered for print.

96. Library Bookmark

PRIZE: \$50

All youth up to 16 years of age are invited to design a bookmark that shows why you love libraries or why you love reading.

RULES:

- Size 2.5" x 8", single sided, colour or black and white.
- Must be handmade (no computer).
- Must include a bookmark tassel (i.e. wool, string, etc).
- Winning bookmark becomes the property of the Leeds and Thousand Islands Public Library.
- May be altered for printing and reproduction.

- 97(A) O.A.A.S. Poster Competition - Grade 6 and under

- 97(B) O.A.A.S. Poster Competition - Grade 7 - 12

PRIZE: (A) \$15 - (B) \$15

RULES:

- "Promoting Your Fair" - name and date must be clearly shown on poster.
- Must be hand drawn.
- Minimum 8.5" x 11", without border.
- Maximum 11" x 17", without border.
- Must be mounted on black Bristol board showing 2" border.

Winning poster will be entered at the district competition.

Winning poster becomes the property of Lansdowne Agricultural Society.

CULINARY ARTS FOR YOUTH

There are three classes in Culinary Arts on page 20, (Classes 96 - 98)

SEWING FOR JUNIORS (Grade 8 and under)

There are three classes of sewing on page 18, just for juniors: (Classes 71 - 73)

Juniors

Pick Up Your Prize Money At The Office
Saturday, July 18th after 12 noon
Prize Money Over \$20 Will Be Paid By Cheque

Handicrafts

Section G

CONTACT: Jackie Truesdell 613-659-3213

ENTRY FEE: 10% will be deducted from prize money.

No entry fee for Junior Classes 71 - 73

PRIZES: \$5 - \$4 - \$3

RULES: Articles must be clean or they will not be judged.

Must be new work, made by exhibitor, not previously exhibited at Lansdowne Fair

Sample of fabric or yarn must be attached to entry tag

Sewing

1. Unisex pyjama bottoms - Old McDonald's Farm theme
2. Vest - any material
3. Sleeveless blouse or tank top
4. Lady's blouse with set-in sleeves
5. Skirt, any style, any type, for woman or child
6. Lady's dress, any style, not formal
7. Lady's evening or formal attire
8. Casual pants for any member of the family
9. Casual jacket for man or woman
10. Article made of polar fleece (eg. jacket, vest, cape, shirt, hat)
11. Summer shorts, any style
12. Sunsuit or romper set, size 6 & under
13. Girl's or boy's jacket, any style
14. Girl's dress, plain
15. Girl's dress, fancy
16. Dance or skating costume for a child
17. Hallowe'en costume for a child
18. A baby item (e.g. pillow, bib, bumper pad)
19. Baby's shower gift - 3 sewn items
20. Baby's fancy outfit (e.g. Christening gown)
21. Oven Mitts
22. Bib apron - Old McDonald's Farm theme
23. Practical potholders - set of 2
24. Clothespin bag
25. Bag or tote - Old McDonald's Farm theme
26. Article of smocking
27. Table runner
28. Novelty sewing kit with accessories
29. Decorative cushion - Old McDonald's Farm theme
30. Casserole carrier

AWARD CERTIFICATE: Best Sewing - Classes 1-30

Knitting

31. Set of 4 egg cozies
32. Lady's cardigan
33. Lady's pullover
34. Lady's pullover, pattern or fancy stitch
35. Lady's bulky-knit cardigan
36. Lady's bulky-knit pullover
37. Lady's sleeveless vest or top, fancy-stitch or pattern
38. Lady's vest, cotton, fancy-stitch, plain or pattern
39. Man's pullover or cardigan
40. Child's cardigan - using 3 ply wool
41. Child's pullover - using 3 ply wool

42. Character sweater
43. Slippers
44. Knitted scarf
45. Child's poncho
46. Mittens - children's, not under 1 year
47. Mittens - adult
48. Newfie mitts
49. Any style - knitted winter hat
50. Doll clothes, 1 outfit, for 12" - 15" doll
51. Light - weight wool socks
52. Heavy work socks
53. Toy or doll
54. Afghan
55. Baby's jacket, fancy
56. Baby's dress
57. Baby's afghan, 36"x 45" or larger
58. Dishcloths - (3) different patterns, mounted

AWARD CERTIFICATE: Best Knitting - Classes 31 - 58

Crocheting

59. Baby's afghan, 36"x 45" or larger
60. Baby's jacket
61. Baby's toque
62. Hanging hand towel with crocheted top
63. Afghan
64. Tablecloth
65. Table hot pads (2)
66. Any item, lace trim not less than 1"
67. Small doilies, (12" or less), 3 different patterns, mounted
68. Center piece (over 12")
69. Dishcloths - (3) different patterns, mounted
70. Any article of crocheting not listed

AWARD CERTIFICATE: Best Crocheting - Classes 59 - 70

Juniors Only (Grade 8 and under)

NOTE: no entry fee for classes 71 - 73

71. Any article of hand sewing
72. Any article of machine sewing
73. 3 like buttons sewn on a piece of material

Community Service Projects

Instructions for #74, #75 and #76 are available by calling Nancy at 613-659-3605. Entries will not be returned.

See page 5 for further details.

ENTRY FEE: 10% will be deducted from prize money.

PRIZES: \$10 for the exhibitor with the most caps, \$5 for any exhibitor with more than 3 caps (crocheted, sewn and/or knitted)

NOTE: This section will not be judged. Prizes will be based on quantity only.

74. Crocheted caps
75. Sewn caps
76. Knitted caps

Culinary Arts

Section H

CONTACT: Kathy Grier 613-659-3095

ENTRY FEE: 10% will be deducted from all prize money. No entry fees for Junior Classes 96 - 98

PRIZES: \$5 - \$4 - \$3 (unless specified)

RULES:

- No food colouring allowed.
- No mixes to be used in cooking exhibits.
- Baked items must be placed on paper plates in Ziploc bags - no Saran Wrap.
- Paper liners are acceptable
- Must not have fabric decoration on lids.
- Perishable exhibits not awarded a prize may be removed after completion of judging. Please see a committee member in charge to do so.
- Fasten entry tag securely to jar. (ie. elastic band)
- PLEASE LABEL "HOT" TO ITEMS IF APPLICABLE.

Yeast Breads

1. Pita Bread(1)
 2. Cinnamon buns(2)
 3. Loaf of 60% whole wheat.
The winner will be required to bake a second loaf to be judged at O.A.A.S. District meeting. Attach recipe to entry tag.
PRIZE: \$10 - \$4 - \$3 (class 3 only)
 4. Loaf of white bread made in bread machine
 5. Loaf of raisin bread
- AWARD CERTIFICATE:** Best Loaf of Bread - Classes 3, 5

Muffins/Biscuits/

Quick Breads

6. Scones - without nuts (3)
7. Tea Biscuits(3)
8. Plain buns, not individual(6)
9. Plain bran muffins(3)
10. Doughnuts, plain(3)
11. Applesauce loaf - half, with nuts
12. Banana loaf - half, with nuts
13. Cherry loaf - half, without nuts
14. Date and nut loaf - half
15. Fruit loaf - half, with nuts
16. Lemon loaf - half, with glaze
17. Zucchini loaf - half, with nuts

Cookies/Squares/Sweets

18. Chocolate chip cookies(3)
19. Drop cookies(3)
20. Ginger snaps(3)
21. Grandma's rolled oatmeal cookies ..(3)
22. Peanut butter cookies(3)
23. Uncooked sweets,
3 varieties2 each
24. Brownies, without nuts,
1 1/2" squares, iced(3)
25. Shortbread cookies(3)
26. Sugar cookies(3)
27. Butter tarts, no fruit or nuts(3)
28. Oatmeal chocolate chip
drop cookies(3)
29. Date squares(3)
30. Maple cream fudge.....3 pieces
31. Chocolate fudge3 pieces
32. Peanut butter fudge3 pieces

Cakes

33. Carrot cake, iced,
single layer.....1 piece
34. Chocolate cake, iced,
single layer.....1 piece
35. Christmas cake,1 slice
36. Gumdrop cake, without nuts.....1 slice
37. White cake, iced,
single layer1 piece
38. Applesauce cake, iced,
single layer.....1 piece

Pies

39. Apple pie1 slice
40. Cherry pie.....1 slice
41. Blueberry pie1 slice
42. Peach pie1 slice
43. Rhubarb crumb-topped pie1 slice
44. Rhubarb pie1 slice
45. Pie of your choice
(no meringue)1 slice

AWARD CERTIFICATE:

Best Pie of Show - Classes 39 - 45

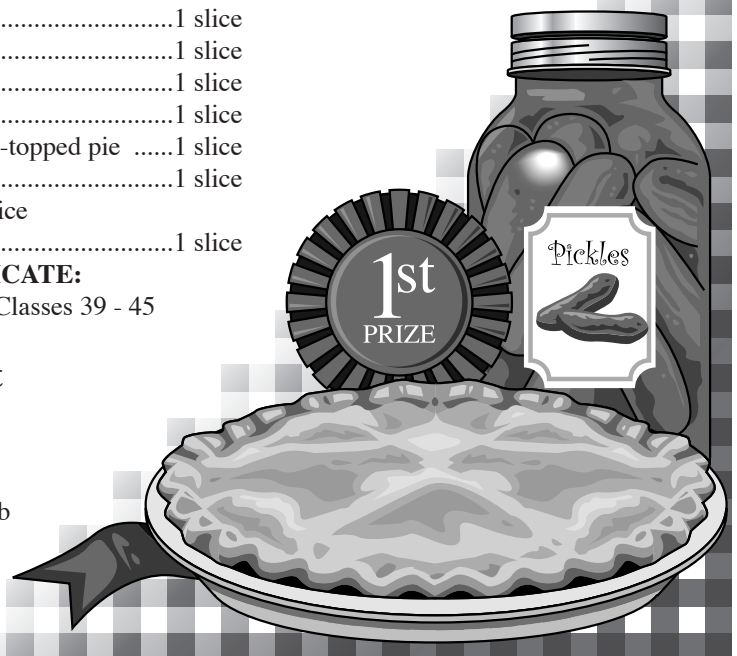
Canned Fruit

46. Cherries
47. Peaches
48. Plums
49. Stewed Rhubarb
50. Pears



Jams and Jellies

51. Strawberry jam, cooked
52. Strawberry jam, freezer
53. Raspberry jam, cooked
54. Raspberry jam, freezer
55. Strawberry-rhubarb jam, cooked
56. Peach jam
57. Orange, grapefruit, lemon marmalade
58. Red currant jam
59. Red currant jelly
60. Grape jelly
61. Crab-apple jelly
62. Red pepper jelly
63. Jam, not listed, cooked, named
64. Jam, not listed, freezer, named
65. Jelly, not listed, named
66. Low calorie diet jam, any kind



Culinary Arts

Section H - Continued

Pickles and Relishes

67. Dill Pickles
68. Icicle pickles
69. Sweet pickles
70. Beet pickles
71. Mustard pickles
72. Bread and butter pickles
73. Ripe cucumber relish
74. Beet relish
75. Corn relish
76. Hot dog relish
77. Chili sauce
78. Fruit chutney
79. Green tomato mincemeat
80. Pickled eggs
81. Pickled onions
82. Pickles, not listed, named
83. Relish, not listed, named
84. Prepared horseradish
85. Cooked salsa, mild
86. Cooked salsa, hot

Lansdowne Fair Theme Specials

87. Best decorated single layer cake depicting Old McDonald's Farm, to be judged on decoration only.
Need not be a real cake.
88. Fancy basket for a shut-in, to include 5 food items, to be judged on appearance only, Old McDonald's Farm theme.

Country Fair Baking Contest

- All entrants must use the sponsor's product and include product label and recipe with each entry.
- All entries will be judged on appearance, taste, texture, creativity of recipe and presentation.
- First place winners must see secretary to have photograph taken, submit recipe, product label, and sign a release form giving permission to the sponsor to use the winner's name, recipe, photograph, in any advertising or publicity without payment.
- All winners must pick up their gift certificates and prizes at the fair office.

89. Banana muffins(3)
Attach recipe and proof of purchase.
Must be made with ROBIN HOOD FLOUR.
1st - \$25 Gift Certificate 2nd - \$10 Gift Certificate
90. Sticky buns.....(2)
Attach recipe and proof of purchase.
Must be made with MAZOLA CORN OIL
or BEEHIVE CORN SYRUP.
1st - \$15 plus Gift Prize 2nd - \$10 plus Gift Prize

91. BERNARDIN Gift Pack
A gift pack for a picnic lunch in the field for "Old McDonald".
Must include no more than 3 filled mason jars sealed with BERNARDIN SNAP lids.
Note: need not be in a basket.
May include extra items such as cutlery, napkins etc.
Judged on appearance only.
1st - \$20 Gift Certificate
A picture of the winning entry will be sent to BERNARDIN to compete in the BERNARDIN National Gift Basket Contest.
92. Raisin pie(1 slice)
Attach recipe for crust and filling and proof of purchase.
Made with TENDERFLAKE.
1st - Gift Prize
2nd - Gift Prize
3rd - Gift Prize
93. White bread.....(1 loaf)
Attach recipe and proof of purchase.
Made with FLEISCHMANN'S YEAST.
1st - \$15 plus Gift Prize
2nd - \$10 plus Gift Prize
94. Raspberry/Peach freezer jam(250 ml jar)
Attach recipe and proof of purchase.
Made with CERTO.
1st - \$20 Product Coupon
2nd - \$10 Product Coupon
95. Apple jelly(250 ml jar)
Attach recipe and proof of purchase.
Made with BERNARDIN PECTIN.
1st - \$20 Gift Certificate

For Youth Only

- NOTE:** no entry fee for classes 96 - 98
96. Best lunchbox snack - homemade squares or bars.....(3)
Open to all youth 12 years of age or younger.
Attach recipe and proof of purchase.
Made with ROBIN HOOD FLOUR.
1st - \$15
 97. White bread made in a bread machine(1 loaf)
Open to all youth under age 16.
Attach recipe and proof of purchase.
Made with FLEISCHMANN'S YEAST.
1st - \$15
 98. Chocolate chip cookie competition.....(3 cookies)
No larger than 3", no smaller than 2", no nuts.
Open to all youth ages 10 - 15 years as of Dec 31, 2009.
The winner will be required to bake 8 more cookies for the competition at the district level.
1st - \$5
2nd - \$4
3rd - \$3

Hobby Crafts

Section I

CONTACT: Doreen Haffie 613-659-2435

ENTRY FEE: 10% will be deducted from all prize money.

PRIZES: \$5 - \$4 - \$3 (unless specified)

RULES: Must be new work, made by the exhibitor, not previously exhibited at Lansdowne Fair. Articles must be clean. Soiled entries will not be judged.

1. Garden sign, any medium, 24" or smaller
2. Door stop, any material
3. Draft stop, any material
4. Appliance cover, named (e.g. toaster, teapot, etc.)
5. 4 placemats, any style
6. Article of bunka
7. Spare toilet roll holder
8. Easter centrepiece
9. Door decoration for Halloween
10. Thanksgiving decoration using a basket
11. Decorated T-shirt or sweatshirt
12. Scrapbooking - two page layout of a theme of your choice. .. Must be enclosed in plastic cover
13. Scrapbooked item suitable to hang on the wall
14. Scrapbooking - two page layout - heritage theme. Must be enclosed in plastic cover
15. Article made from scraps
16. Article made of recycled products
17. Decorated wreath, made of grape vine, straw, or any suitable material - wreath may be handmade or purchased
18. Decorated lampshade (lampshade may be purchased or handmade)
19. One piece of handmade jewellery or accessory
20. Handmade necklace and matching earrings
21. Article of cross stitching, finished
22. Article of needlepoint on plastic canvas
23. Article of chicken scratch
24. Item of hand embroidery (e.g. - dresser scarf, pillowcase, tablecloth)
25. Collage depicting Old McDonald's Farm theme - not to exceed 14" x 22"
26. Hot mats, any material
27. Hand painted "Welcome" sign
28. Article of tole painting - any material
29. Acrylic painting on any material other than canvas
30. Decorative painting on wood
31. Picture to be painted on item that could be found in Old McDonald's Barn, (eg. milk can, watering can, saw blade)
32. Handmade stained glass article
33. Heritage craft (eg. sampler, crewel work, weaving, spun wool, hand-dyed wool, dipped candles, tatting)
34. Article using clay flower pots
35. Wall hanging, not latch hook
36. Decorated birdhouse for indoors

37. Best decorative or functional homemade craft made using a BERNARDIN mason jar(s) and/or 2-piece SNAP-Lid
1st: \$20 BERNARDIN certificate 2nd: \$4 3rd: \$3
38. Hand decorated greeting cards (3 cards with appropriate "verses", each for a different occasion (eg. birthday, anniversary, etc.)
39. Hand decorated notepaper and matching envelopes (set of 4)
40. "Mouse in the House" - maximum 12" (decorated mouse only)
41. Raggedy Ann doll
42. Rooster - handmade from any medium
43. Stuffed toy animal, handmade, any material, suitable for a child to play with (fastened eyes, nose, etc.)
44. Stuffed animal decoration for display only - not suitable for a child - animal may be purchased
45. Handmade doll
46. Scarecrow - handmade, minimum of 3 feet tall, free standing
47. Any glazed ceramic piece from precast greenware
48. Any ceramic piece fired & painted
49. Two novelty magnets
50. Homemade shower gift, for wedding, made with kitchen articles, no placemats
51. Decorated hat, any material, for wall hanging
52. Decorated hat, suitable for Old McDonald's Wife
53. Decorated hat suitable for "Red Hat Lady"
54. Silk flower article
55. Corsage - made from artificial flowers, etc. (displayed in Ziploc bag)
56. Any craft not listed - excluding knitting, quilting, and crocheting

Christmas Crafts

57. Pinecone decoration
58. Christmas stocking
59. Tree skirt
60. Christmas table arrangement
61. Christmas placemats (4)
62. Christmas door decoration, snowman theme
63. Christmas wreath
64. 4 different Christmas tree ornaments, mounted
65. Christmas wall hanging
66. Advent calendar
67. Christmas runner for table
68. Christmas doorstep
69. Handmade Christmas cards (4)
70. Tree-top angel
71. Angel, any material, any design
72. Christmas article of your choice

Hobby Crafts

Section I - continued

Carving

73. Farm animal carving
74. Bird carving
75. Any other carving, not listed

Woodworking

76. Handmade article of furniture
77. Article turned from Canadian wood
78. Bird feeder or bird house themed Old McDonald's Farm
79. Kitchen cutting board
80. Article made from wood, not turned
81. Wooden toy
82. Hand crafted clock (may use purchased mechanism)

AWARD CERTIFICATE: Judge's Choice - Classes 1 - 82

Senior Citizen's Section

ENTRY FEE: No money is deducted from winning entries.

PRIZES: \$5 - \$4 - \$3

Open to seniors 65 years of age and over.

RULES:

You do need an exhibitor's number, and an entry sheet must be turned in to the office.

83. Knitted or crocheted - tam and scarf set
84. Knitted or crocheted - top/pullover vest (shell style)
85. Knitted or crocheted - open front buttoned vest
86. Knitted or crocheted - slippers
87. Knitted or crocheted - lady's cardigan
88. Crocheted doily (12" or less)
89. Crocheted centerpiece (over 12")
90. Handmade craft made by senior and child
91. Small hand - quilted household article up to 10"
92. Fancy Cushion
93. Handwrite your own poem, entitled "Memories"
94. Lap cover 26" x 48"
95. Old recipe book
96. Recycled article, new idea
97. Snapshots of yesteryear - (4) mounted and titled
98. Tie-on apron
99. Small article made of wood

Quilted Articles

100. Wall hanging - prepared for hanging - any technique, machine or hand quilted
101. Miniature quilt - hand or machine quilted
102. Cushion - hand or machine quilted
103. Three different quilt blocks - appliquéd/pieced
104. Magic pillow (quillow) - hand or machine quilted or tied.
105. Table runner - any technique - hand or machine quilted
106. Article of clothing with hand or machine quilting
107. Article of quilting, not a quilt, not listed, hand or machine quilted

ONTARIO ASSOCIATION OF AGRICULTURAL SOCIETIES QUILT COMPETITION
PRIZES: \$15 - \$12 - \$8

Annual Hand Quilted Championship Quilt
Annual Machine Quilted/Wall Hanging Competition
RULES:

Hand Quilted quilts:

- Must be a minimum of 72" x 90".
- Pattern must be named.

Machine Quilt/Wall Hanging:

- Must be measured on the perimeter - minimum of 192".
- The article can be square, rectangular, etc.
- Must be completed on a domestic sewing machine.
- Must have visible machine quilting.

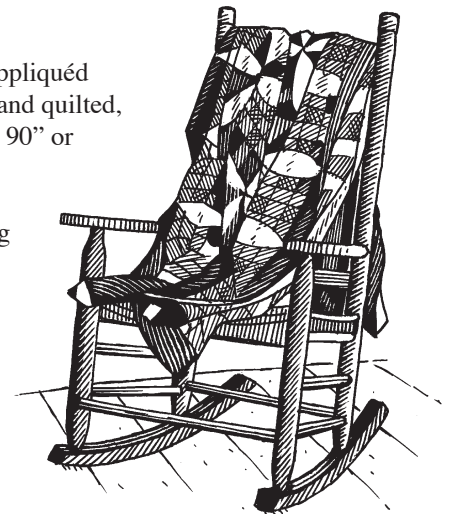
- Entries must be solely made and quilted by the exhibitor.
- Judging will occur at local fairs and district levels.
- Provincial Grand Champion Quilts in each division will be selected at the Annual Convention of O.A.A.S.
- Upon making an entry into the O.A.A.S. competition, the exhibitor agrees to participate in any promotional activities related to the competition.
- The winning O.A.A.S. Champion Quilts will not be eligible to compete in any future District and/or Convention O.A.A.S. competition.
- If your quilt has won first place in a competition at another fair, you must consider the Agricultural Society nearest your home address as the one from which the quilt will be sent to the district level.

NOTE: Grand Champion and Reserve Grand Champion Hand Quilted Quilt will be awarded to the 1st and 2nd winner in class 108.

Grand Champion and Reserve Grand Champion Machine Quilted/Wall Hanging will be awarded to the 1st and 2nd winner in class 109.

108. Quilt - pieced or appliquéd (pattern named), hand quilted, finished size 72" x 90" or larger.

109. Quilt/Wall Hanging - any technique, machine quilted, home sewing machine, finished size 48" x 48" or larger.



Hobby Crafts

Section I - continued

LARGE QUILTS (King, Queen, Double, Twin)

PRIZES: \$15 - \$12 - \$8

110. Pieced and/or appliquéd by hand or machine, machine quilted by long arm machine or home sewing machine
111. Any other technique, not listed, hand or machine quilted (whole cloth, yo-yo, Celtic, Cathedral window, etc.)
112. Pieced and/or appliquéd by hand or machine, tied or tacked by hand or machine
113. Any type quilt made by a group or two or more persons (this includes tops made by quilter and long - arm machine quilted by a professional)

OTHER SIZED QUILTS

(Dimensions not meeting Large Quilt criteria)

PRIZES: \$5 - \$4 - \$3

114. Pre-printed panel, finished and quilted by hand or machine
115. Pieced and/or appliquéd by hand or machine, hand quilted or by machine
116. Any technique hand or machine, quilted on a long arm machine
117. Pieced and/or appliquéd by hand or machine, tied or tacked by hand or machine

LAP QUILTS OR THROWS

118. Pieced and/or appliquéd by hand or machine, hand quilted
119. Pieced and/or appliquéd by hand or machine, machine quilted
120. Pieced and/or appliquéd by hand or machine, machine quilted on a long arm
121. Any technique quilted by hand or machine, tied or tacked by hand or machine

BABY QUILTS

122. Pieced and/or appliquéd by hand or machine, hand quilted or machine quilted
123. Pre-printed panel, finished and quilted or tacked by hand or machine
124. Any technique by hand or machine, tied or tacked by hand or machine
125. Any technique, hand or machine, quilted on a long arm

QUILT SPECIAL

126. Quilt made prior to the year 2000, any size, technique, hand or machine quilted or tied. Owned by exhibitor, made by exhibitor or a relative. State maker's name on entry tag.

AWARD CERTIFICATE: Judge's Choice - Classes 100 - 125 (excluding classes 108 & 109)

RUGS

127. Any type of rug

Visual Arts

Section J

CONTACT: Dawne Fiegen VanKaldenkerken 613-659-2945

ENTRY FEE: 10% will be deducted from all prize money

PRIZES: \$5 - \$4 - \$3

RULES:

If the artist's name appears anywhere on the entry, please make sure it is covered before the judging begins.

AGES UP TO, AND INCLUDING 18 YEARS OF AGE

NO FRAMING FOR CLASSES 1 - 10

(But work should have clean, straight edges)

CLASS

1. Oil Painting
2. Watercolour Painting
3. Acrylic Painting
4. Charcoal Sketch
5. Pencil Sketch - lead and/or coloured
6. Soft Pastel Sketch
7. Oil Pastel Sketch
8. Pen and Ink Drawing
9. Multi Media
10. Collage

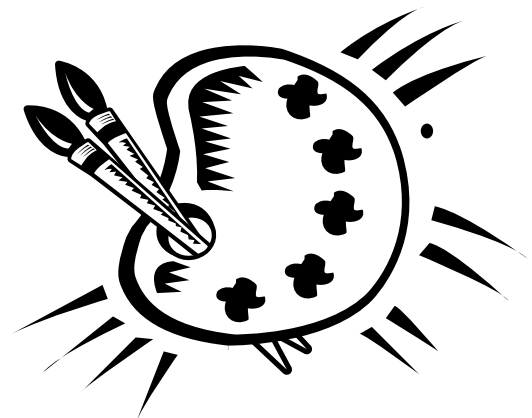
AWARD CERTIFICATE: Judge's Choice - Classes 1 - 10

ADVANCED CATEGORY

MUST BE FRAMED FOR CLASSES 11 - 17

11. Oil Painting
12. Watercolour Painting
13. Acrylic Painting
14. Pencil/Charcoal Sketch
15. Pastel Sketch
16. Pen and Ink Sketch
17. Multi Media

AWARD CERTIFICATE: Judge's Choice - Classes 11 - 17



Photography

Section K

CONTACT: Dawne Fiegen VanKaldenkerken 613-659-2945

ENTRY FEE: 10% will be deducted from all prize money

PRIZES: \$5 - \$4 - \$3

RULES:

- All photographs must be a standard 4" x 6" unless otherwise stated and mounted on a piece of Bristol board with a border not to exceed 1".
- Must be new photos, photographed by exhibitor, not previously exhibited at Lansdowne Fair.
- Any camera type may be used for all classes.

ENTRIES THAT DO NOT CONFORM TO THESE STANDARDS WILL BE DISQUALIFIED.

CLASS

1. Domestic animal photo - cat(s)
2. Domestic animal photo - dog(s)
3. Domestic animal photo - other animal(s)
4. "Light and Shadow"
5. Nighttime Photo
6. Farm machinery
7. "Life on the Farm"
8. "Winter Wonderland"
9. Most humorous photo - with caption
10. "Reflections"
11. "Stormy Weather"
12. "Relics of Yesteryear" (no cars or people)
13. "Day at the Beach"
14. Three photos of 2008 Lansdowne Fair Events - mounted on a single piece of Bristol board with a border not to exceed 1"
15. One photo of Lansdowne 2008 Harvest Fun Day
16. Three related coloured photos - mounted on a single piece of Bristol board with a border not to exceed 1"

17. Black & white photo, FRAMED, photo max. 8" x 10"
18. Portrait photo, FRAMED, photo max. 8" x 10" (photo must show control of pose and lighting)
19. Bird, fish, reptile
20. Sports photo
21. Boat(s)
22. Panoramic sized photo
23. "Misty Mornings"
24. Black & white photo
25. Fence rows
26. "Kids do the darndest things"
27. Autumn
28. FRAMED scenic photo depicting Lansdowne & area (within 20 km of Lansdowne Village) - state where on entry tag
29. "The Four Seasons" - same photo taken each season
30. "Recreation Between The Ages" - a photo depicting people of a range of ages playing together. (eg. grandparents and grandchildren)

AWARD CERTIFICATE: Judge's Choice - Classes 1-29

TIPS:

1. There are so many photos entered in each class that the judges struggle to decide upon the best. Usually the first ones eliminated are because of poor photo quality. If you think your photo is a winner, ensure that it is developed professionally.
2. Watch for things that detract from your photo (eg. date stamped on front, hydro lines, etc.)
3. Make sure that the primary subject of the photo is what the description states.

Antiques and Collectibles

Section L

New Section for 2009.

CONTACT: Dean Meneilley 613-659-4846

Email: lansdowneweb@hotmail.com

ENTRY FEE: 10% will be deducted from all prize money

PRIZES: \$5 - \$4 - \$3

RULES:

1. Articles must be at least 50 years old.
2. Please submit a duplicate of your entry form - you must have your stamped entry form when removing entries.
3. Historical interest/approximate age of entry would be appreciated.

CLASS

1. A postcard from Leeds County
2. An invoice from a Leeds county business

3. An item of Lansdowne Fire Department memorabilia
4. An item manufactured in Leeds county
5. An item of Lansdowne Fair memorabilia.
6. An item of Lansdowne Rural Telephone Company memorabilia
7. A souvenir of Leeds County
8. A photograph depicting Leeds County transportation
9. A photograph depicting farm life in Leeds County
10. A photograph depicting a leisure activity in Leeds County
11. A Leeds County Sampler (needlework)
12. An envelope mailed to/from a defunct Post office in Leeds County
13. A Leeds County ledger, account or diary
14. Most unusual antique with a history

Rules And Regulations

For Lansdowne Fair Competitors, 2009

How to enter:

1. All exhibitors must have an EXHIBITORS'S NUMBER (obtained from the secretary). Those entering junior crafts up to grade 8, western (14 and under), or senior sections do not pay the \$5 exhibitor's fee and no entry fee is deducted from these sections.
2. Entries in all other sections require a \$5 exhibitor fee.
3. Complete the ENTRY FORM. Entries must be made in numerical order, and correspond to the wording in the prize list. Only one item can be entered in each class (unless stated e.g. heavy horses).
4. Every entry must have an ENTRY TAG attached to it, fully completed by the exhibitor. Each tag must be legible and signed. These are available by contacting the secretary:

Nancy Kehoe
P.O. Box 119
Lansdowne, ON
K0E 1L0
613-659-3605

The fair office will be open from Tuesday, July 14th to Thursday, July 16th, from 1:00 p.m. to 8:00 p.m. Be sure to include section by letter, class by number. List the name of the article exactly as listed in the prize book.

**AN IMPROPERLY COMPLETED ENTRY TAG
COULD DISQUALIFY YOUR EXHIBIT.**

5. Entries must be given to a committee member in the appropriate exhibit area on Thursday, July 16th, 7:00 - 9:00 p.m., or Friday, July 17th, 8:00 - 9:00 a.m.
6. **NO PRIZE MONEY WILL BE PAID UNLESS A FULLY COMPLETED ENTRY SHEET HAS BEEN SUBMITTED TO THE OFFICE.**

PLEASE FOLLOW THESE RULES

1. Judging of most classes will begin at 10:00 a.m. on Friday, July 17th. All exhibit areas will be closed until judging is complete (about 3:00 p.m.)
2. Gates to the upstairs exhibit hall will be closed at 5:00 p.m., Sunday, July 19th.
3. All entries (except culinary) must remain on display until pickup time between 7:00 - 7:30 p.m., Sunday, July 19th, or between 9:00 - 10:00 a.m., Monday, July 20th. Exhibitors must see a committee member in charge before removing any article or exhibit. (Perishable items not awarded a prize may be removed after completion of judging. See committee member to do so).
NOTE: Any exhibit not picked up during these hours will become the property of the Lansdowne Agricultural Society.
4. Prize money of less than \$1 will not be paid,
5. Prize money will not be paid unless article or animal is listed on the entry form. Any changes or substitutions must be made through the Secretary's Office.

6. All exhibits must be the work of the exhibitor whose name is on the entry form and entry tag. **ALL ARTICLES MUST BE NEW WORK - NOT EXHIBITED AT THE LANSDOWNE FAIR BEFORE.** Soiled crafts and clothing will not be judged.
7. In all sections of the Prize List only one award shall be made to an exhibitor in each class. Exceptions: Livestock Classes
8. No exhibitor will be allowed to interfere with the judges in the performances of their duties. Exhibitors so interfering will forfeit their right to any premiums to which they might otherwise be entitled. Judges' decisions shall be final. No one shall be allowed in the Exhibit Building while judging is taking place.
9. In the absence of competition in any section, or if the stock or articles exhibited are of inferior quality, the judge will exercise discretion as to whether they will award first, second, or third.
10. In case of insufficient funds due to weather or other conditions, the Society reserves the right to pay only a percentage of the prize money awarded for exhibits.
11. Prize money for adults will not be paid for at least one month to give the Directors time to settle any disputes which may arise and sanction payment for exhibits.
12. \$5 Exhibitor Fee will be withheld from all eligible exhibitors winning ten dollars (\$10) and over and shall be placed to the credit of the society for the following year (unless otherwise requested).
13. Protests must be made in writing immediately following judging of the class. Reasons for the protest must be clearly stated and accompanied by a deposit of \$5 which shall be forfeited if the protest is not substantiated.
14. Any exhibitor or attendant who is guilty of creating a disturbance, whether openly criticizing the judge or using obscene language to any judge or officer, shall forfeit the right to any award and may be suspended from exhibiting.

THE DIRECTORS WILL:

- Take every precaution to ensure the safety of articles sent to the Exhibition, but the owners must take the risk of exhibiting. Should any article be accidentally damaged, lost or stolen, the Directors will give all assistance in their power toward the recovery of same, but will not make payment for the value thereof.
- Avail themselves of the powers vested in them by the Society Act re: gambling, huckstering, soliciting funds, etc.
- Insist that the foregoing rules be strictly adhered to and reserve the right to interpret said rules.

